

Dawn of a New Era – The Tumultuous 20's

A period that witness profound changes to popular attitudes about decency, proper behavior, morality, and the role of government. With equally profound changes in standards of living, technology, communication, and consumerism this era produced a national culture more dynamic and universal than in any earlier time. These profound changes fostered both **social rebellion and political radicalism** as well as powerful **social and political conservatism**.



REVIEW

[Go to your class's answer form](#)

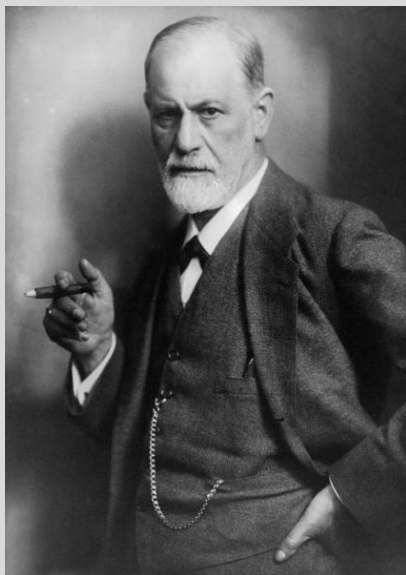
Based what you learned yesterday, give one example of each:

- 1) Profound change in attitudes about proper behavior
- 2) Profound change in role of government
- 3) Profound change in standards of living
- 4) Evidence of a increasingly universal American culture

Jazz Age Assault on Tradition



<http://www.youtube.com/watch?v=TRvella4uAs>





“The sequel was like a children's party taken over by the elders, leaving the children puzzled and rather neglected and rather taken aback. By 1923 their elders, tired of watching the carnival with ill-concealed envy, had discovered that young liquor will take the place of young blood, and with a whoop the orgy began. The younger generation was starred no longer.” –F. Scott Fitzgerald

REVIEW

[Go to your class's answer form](#)

Provide evidence for the following claim:

The 1920's witnessed both changes and continuities regarding the role of women in society.

Join the party with
Chesterfield



MAYBELLINE products may be purchased at all fine goods stores. Identify the genuine by the Maybelline Girl in the design.
MAYBELLINE CO., Chicago

This delicately perfumed cosmetic instantly makes the eyes appear larger and intensely interesting! It deepens the color and imparts a wonderful brilliance that vivifies the expression, at the same time giving new loveliness to all the tones of the complexion.

Applied lightly for daytime use and with somewhat deeper shading in the evening, the four colors of Maybelline Eye Shadow are most effectively used as follows: Blue is to be used for all shades of blue and gray eyes; Brown for hazel and brown eyes; Black for dark brown and violet eyes. Green may be used with eyes of all colors and is especially effective for evening wear. If you would make the most of your appearance, a thrilling discovery awaits you in Maybelline Eye Shadow. Incased in an adorably dainty gold-finished vanity at 75c.

Lashes Appear Longer by Using
Maybelline Eyelash Darkener

Dick, luxuriant lashes are essential to feminine beauty and Maybelline Eyelash Darkener is the choice of millions of women the world over. A few simple brush strokes of either the Solid or Waterproof Liquid form and the magic of Maybelline Eyelash Darkener is achieved instantly. This easily applied, perfectly harmless beauty aid, in Black or Brown, will delight you, particularly when applied after Maybelline Eye Shadow. Be sure to insist upon genuine Maybelline. Price 75c.

and Maybelline
Eyebrow
Pencil

Neatly lined, perfectly
framed eyebrows so every
woman knows that the
beauty is in the eyes
and the eyebrows
too! They are available
in natural white
and eye enhancing
shades of brown and
black. You'll
love this perfect
eye-brow
framing
pencil!
Available in
Black,
Brown,
and
White.

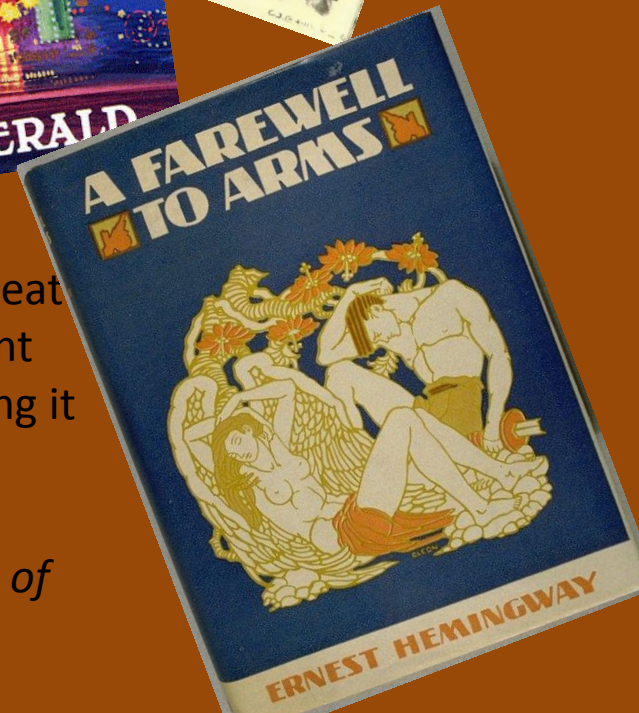
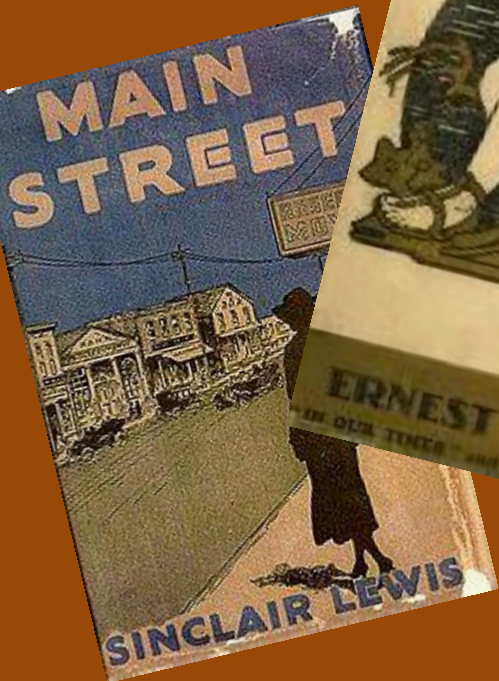


Maybelline

EVYELASH DARKENER • EYE SHADOW • EYEBROW PENCIL

Instant Beautifiers for the Eyes

LITERATURE



"I don't want to repeat my innocence. I want the pleasure of losing it again."

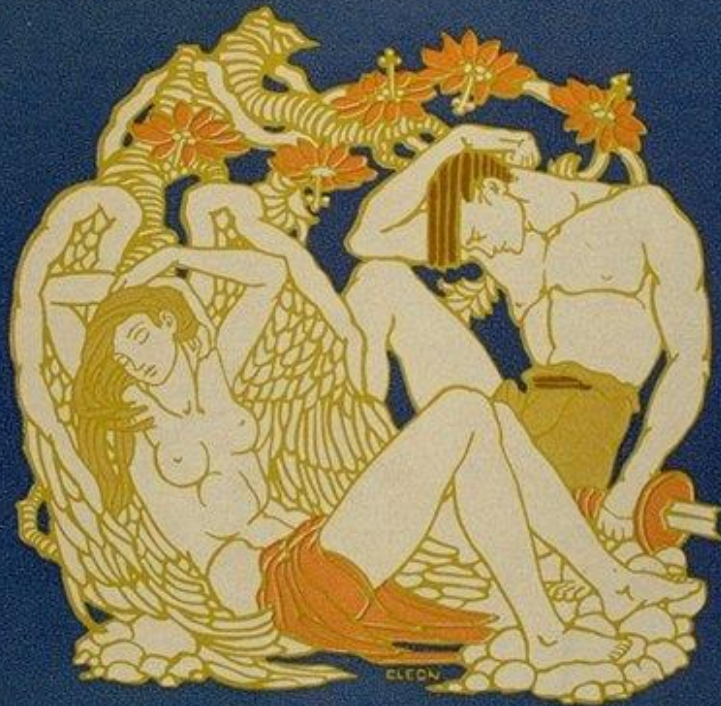
— F. Scott Fitzgerald, *This Side of Paradise*

REVIEW

[Go to your class's answer form](#)

How did F. Scott's Fitzgerald's work differ from Sinclair Lewis?

A FAREWELL TO ARMS



ERNEST HEMINGWAY

“I was always embarrassed by the words sacred, glorious and sacrifice and the expression in vain. We had heard them, sometimes standing in the rain almost out of earshot, so that only the shouted words came through, and had read them, on proclamations that were slapped up by billposters over other proclamations, now for a long time, and I had seen nothing sacred, and the things that were glorious had no glory and the sacrifices were like the stockyards at Chicago if nothing was done with the meat except to bury it.”

—Ernest

Hemingway, *A Farewell to Arms*, 1929

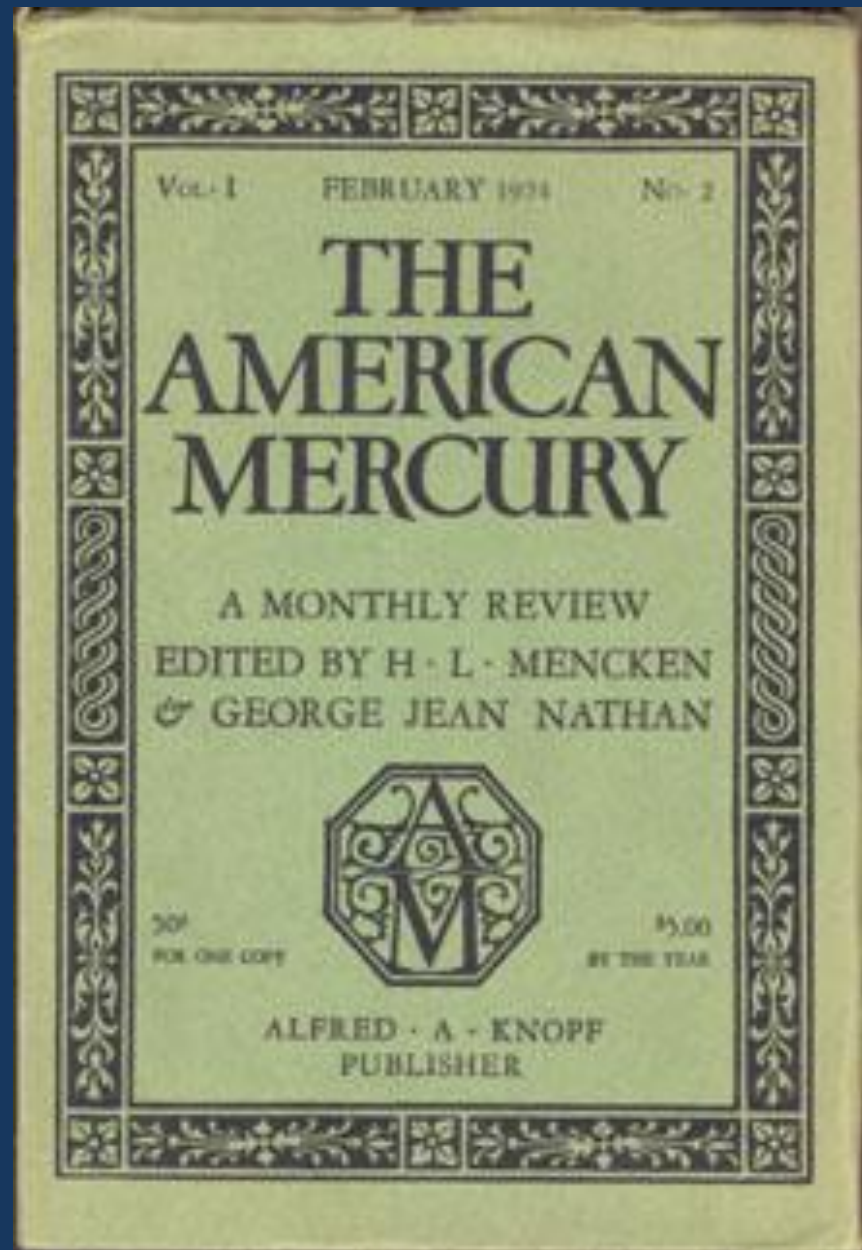
Journalism

Democracy is a pathetic belief in the collective wisdom of individual ignorance.

Every election is a sort of advance auction sale of stolen goods.

It is inaccurate to say that I hate everything. I am strongly in favor of common sense, common honesty, and common decency. This makes me forever ineligible for public office.

H. L. Mencken



Art



1928 Thomas Hart Benton Boomtown

Art



Edward Hooper, Sunday 1926

Art



Criss-Crossed Conveyors, River Rouge Plant, Ford Motor Company, 1927,
Charles Sheeler,
Gelatin silver print

Art

Joseph Stella's oil-on-canvas painting, "Brooklyn Bridge" (1919–1920),



Art

Georgia O'Keeffe, Radiator
Building-Night, New York, 1927,
Oil on canvas



REVIEW

[Go to your class's answer form](#)

Choose one of the paintings I discussed and explain how it is a commentary on the 1920's

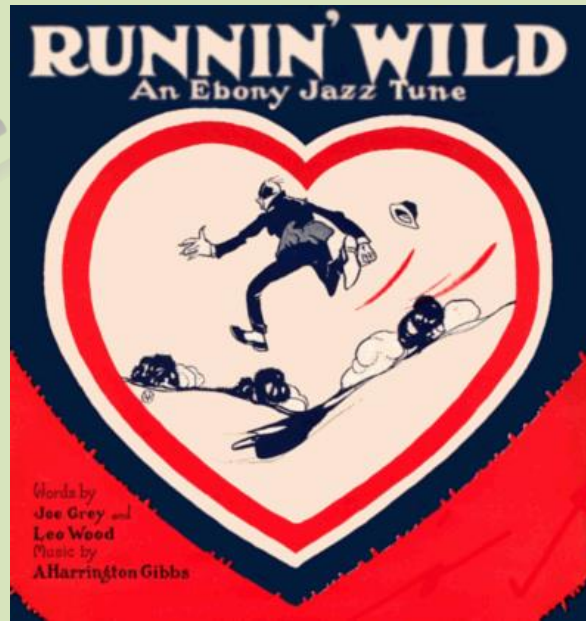
HARLEM RENAISSANCE



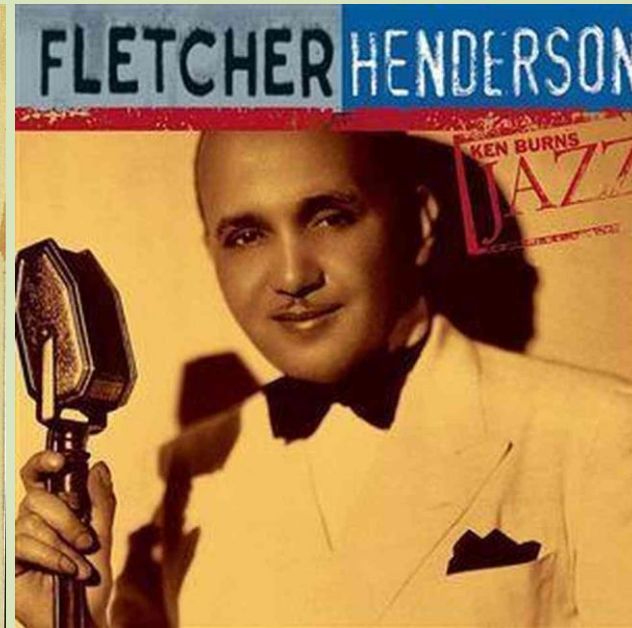
HARLEM RENAISSANCE LITERATURE



HARLEM RENAISSANCE MUSIC



William Grant Still, *Afro American Symphony*, 1931



Music



Dawn of a New Era –

The Tumultuous 20's

A period that witness profound changes to popular attitudes about decency, proper behavior, morality, and the role of government. With equally profound changes in standards of living, technology, communication, and consumerism this era produced a national culture more dynamic and universal than in any earlier time. These profound changes fostered both **social rebellion and political radicalism** as well as powerful **social and political conservatism**.

REVIEW

[Go to your class's answer form](#)

Describe two ways the Harlem Renaissance and/or the music of this era support the statement above